

“There she stands, proud in all her glory.”

Missouri County Record

Summer 2022



Webster County Courthouse Marshfield, Missouri

Inside this issue

- MAC Executive Director's message – page 3
- Scotland County knows the true value of using biodiesel, page 6
- MAC Annual Conference registration – pages 20-21
- MAC County Achievement Award competition – pages 24-25

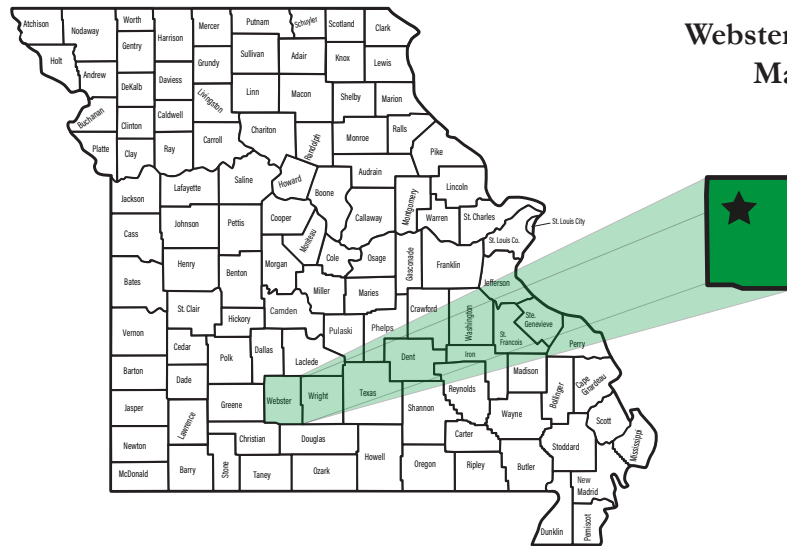
President **Batina Dodge**, Scotland County
President-Elect **Lori Smith**, Adair County
2nd VP **Pete Frazier**, Cape Girardeau County
3rd VP **Gary Jungermann**, Callaway County
Treasurer, **Carol Johnson**, Dallas County
Past President **Susette Taylor**, Atchison County
At-Large **Melinda Robertson**, Polk County
At-Large **Sherry Parks**, Livingston County
At-Large **Karen Rentschler**, Callaway County
At-Large **Kyle White**, DeKalb County
Jackie Morris, Sullivan County (1)
Ron Hook, Buchanan County (2)
David Gall, Buchanan County (2)
Frank White, Jackson County (5)
Theresa Cass Galvin, Jackson County (5)
Mike Minor, Monroe County (6)
Janet Thompson, Boone County (7)
Brianna Lennon, Boone County (7)
Jim Marcum, Pettis County (8)
Jim Platt, Bates County (9)
Amanda Huffman, Morgan County (10)
Karen Digh Allen, Callaway County (12)
Dave Hinson, Franklin County (13)
Mary Jo Straatmann, Franklin County (13)
Sam Page, St. Louis County (14)
Dennis Gannon, Jefferson County (15)
Angie Curley, Dent County (16)
Joe Loyd, Reynolds County (17)
Jared Kutz, Perry County (18)
Chris Rickman, Butler County (19)
Gary Youngblood, Barry County (20)
John Russell, Greene County (21)
Sheryl Dawson-Spaulding, Greene County (21)
Shelly Chadwell, Wright County (22)
Barbara Davolt, Polk County (23)
Randee Kaiser, Jasper County (24)
John Bartosh, Jasper County (24)
Clint Tracy, Cape Girardeau County (25)
Roger Hudson, Cape Girardeau County (25)
Don Williams, Camden County (26)
Rowland Todd, Camden County (26)
Jeff Hoelscher, Cole County (27)
Ryan Johnson, Cass County (28)
Randy Jones, Cass County (28)
Brandon Williams, Taney County (29)
David Clark, Taney County (29)
Harold Gallaher, St. Francois County (31)
Ralph Phillips, Christian County (32)
Amy Dent, Christian County (32)
Commissioners' Pres. **Tim Brinker**, Franklin County
Clerks' Pres. **Shane Schoeller**, Greene County
Auditors' Pres. **Jim Laughlin**, Camden County
Assessors' Pres. **Daniel Franks**, Howell County
Collectors' Pres. **Larry Vincent**, Cole County
Treasurers' Pres. **Denita Williams**, Dent County
Sheriffs' Pres. **Scott Munsterman**, Johnson County
Circuit Clerks' Pres. **Tom Barr**, Greene County
Police Admins' Pres. **Danielle Boggs**, Webster County
Recorders' Pres. **Gerald Smith**, St. Louis County
Prosecutors' Pres. **Dan Patterson**, Greene County
Central Region Exec. **Tracy Graham**, Audrain County
NAACo Board Member **Bob Dixon**, Greene County
AC Trust Chair **Paul Koeper**, Cape Girardeau County

Webster County

Missouri Courthouses: Building Memories on the Square

The court ordered repairs to be made that same year. Many complaints about the poor quality of the building were registered in the years that followed, but

Voters authorized a bond issue for the present courthouse in 1938, and after the Work Projects Administration accepted the proposed plan for a new building and agreed to help fund the construction, work began in 1939. Cost of the building amounted to about \$150,000 and construction was completed in 1941.



Webster County
Marshfield



Missouri County Record

A publication of the Missouri Association of Counties
1648 East Elm St., P.O. Box 234, Jefferson City, MO 65102-0234
Telephone: 573-634-2120 Fax: 573-634-3549
www.mocounties.com

Steve Hobbs, *Executive Director*
Cindy Wells, *Finance and Operations Manager*
Grace Toeppen, *Executive Assistant*
Sean McGonigle, *Risk Manager*

David Owen, *Deputy Director*
Bev Cunningham, *Deputy Trust Administrator*
Carah Bright, *Member Engagement Director*
Meredith Melahn, *Event & Marketing Coordinator*

The Missouri Association of Counties, founded in 1972, is a nonprofit corporation and lobbying alliance of county elected and administrative officials who work to improve services for Missouri taxpayers. The board of directors meets on the third Wednesday of designated months in Jefferson City to promote passage of priority bills and monitor other legislation before the state General Assembly and the United States Congress. The Missouri County Record is produced four times annually by the association staff. Subscription rates for non-association members are \$15 per year prepaid. Rates for association members are included in membership service fees. All articles, photographs and graphics contained herein are the property of the association and may not be reproduced or published without permission. Advertising rates are available upon request.

Vol. 28, No. 2

Executive Director's Message

The 2022 legislative session is in the books and everyone can take a deep breath. In a session filled with record budget surpluses and inter-party bickering, we as counties fared pretty well.

In the state's \$49 billion budget signed into law by the governor, there was a small increase in the funding in the per parcel assessment fund. There was also a \$140 million increase in mental health funding. Many of the programs that received increased funding corresponded with the recommendations from our own Policing, Justice and Mental Health Steering Committee.

Assessing and taxing solar farms is another issue facing counties that needs to be addressed. Throughout this session the efforts of our Intergovernmental Affairs, Finance, Tax Issues and Pensions Steering Committee played a pivotal role in providing language in Senate Bill 745 to create a task force to make recommendations on how solar farms can be taxed, as well as recommending how to set the tax rates. It will also define what is for resale and what is for personal use.

Another legislative priority was put forth by the members from our IT, Telecommunications and Broadband Steering Committee, who played an integral role in getting the language in Senate Bill 820 vetted and passed that establishes guardrails for broadband expansion across our state.

In House Bill 1606, a local government omnibus bill, there is language to standardize the salaries of public administrators, allow counties to publish streamlined



financial statements and allow for online tax sales of properties that are delinquent on their taxes. All priorities that our members adopted last year!

As you can see, one common denominator is the involvement our steering committees have made in their inaugural year. Although the application process has ended to be a candidate for appointment to one of the committees this year, I ask that you seriously consider joining a steering committee in the future to help shape our policy as we continue to move forward as an association.

If you have not looked at MAC's website lately, please visit it. I think you will like the changes and appreciate how user friendly it is. While some parts of the member's section are not complete, we hope to have them up soon. Be sure to create a user name and password and then you will have access to all the news as it happens. If you are having trouble creating an account, do not hesitate to reach out to our office.

Save the Date – I know it is hard to believe, but our 51st Annual Conference on Nov. 20-22 at Margaritaville Lake Resort in Osage Beach will be here before you know it. MAC staff and our executive board are already working on events and breakout sessions to educate and entertain our membership. We are also looking at changing the scheduling of some of the events, so look closely at the agenda when it comes out and make your plans accordingly.

Yours in service,

A handwritten signature in black ink, appearing to read 'Steve Hobbs'.

Steve Hobbs,
MAC Executive Director



www.amce.com



Scotland County knows the true value of using biodiesel

The value of using biodiesel fuel for county fleets may not always show up on paper or in a spreadsheet. That is one thing the commissioners of Scotland County are all right with when they approved a contract to begin using B20 biodiesel in their county fleet this year.

In May, Scotland County was named as the newest Agri-Ready Designated County by Missouri Farmers Care, a coalition of more than 40 leading Missouri agricultural groups that grants designation to counties that create an environment that supports the state's largest industry – agriculture.

Last year, Scotland County generated \$158 million in agricultural sales according to a study conducted by the Missouri Department of Agriculture.

Prior to its Agri-Ready designation, the commissioners were already looking for ways to support the county's largest economic industry and using biodiesel fuel for its county's road and bridge fleet seemed like the ideal fit.

"We talked about (using biodiesel) here amongst ourselves," Associate Commissioner Brent Rockhold said. "We didn't have any contact with other counties that are using it. At the MAC Annual Conference last fall, we talked with Matt Amick from the Soybean Association about using this type of blended fuel. Then we contacted Caterpillar and John Deere that we have equipment from and they said the fuel would work fine in their equipment and wouldn't affect the warranty.

"With us being an agriculture community, we figured that it would be a good route to go."

At the beginning of the year, the commissioners approved the bid for Prairieland FS to begin supplying the



photo submitted by Scotland County

An employee of Scotland County's road and bridge crew fills up one of the county's fleet, a Caterpillar 12 M3 Motor Grader, with B20 biodiesel from its depot in Memphis, Mo. Scotland County began using B20 biodiesel in its county fleet for the first time this year.

county with B20 diesel instead of their typical summer blend of regular No. 2 diesel.

It's the first time Scotland County has ever used B20 biodiesel in its fleet equipment.

B20 diesel is a blend of 20 percent biodiesel and 80 percent conventional diesel. The B20 diesel fuel that Scotland County uses is produced with soy bean oil, but biodiesel can also be made from different vegetable oils and animal fat.

"We had several discussions about moving to soy-blend diesel and we ended up putting out for a bid of 28,800 gallons of biodiesel," Rockhold said.

Prairieland FS was awarded the

contract at a cost of \$2.96 per gallon. Rockhold said the company will be getting the county's biodiesel from Illinois, but believes it's a great opportunity for his county and surrounding counties because it helps to support the agriculture community throughout the region.

While \$2.96 per gallon of biodiesel may seem cheap now, it wasn't the case when the commissioners had approved the contract earlier in the year.

At the time, regular No. 2 diesel, which doesn't contain any blend of biodiesel, was slightly cheaper, but that didn't matter to the commissioners because the value of biodiesel is not always

continued on page 6

www.mocounties.com

Ransomware Table Top Exercise for Public Officials

- Work together with public sector peers to respond to a real world ransomware scenario.
- Produced by the Missouri Department of Homeland Security, and hosted by Stronghold Data.

LOCATIONS

Joplin, MO

October 5th

Springfield, MO

October 6th

Seating is limited.



A New Charter TECHNOLOGIES Company >>



CONTACT US FOR REGISTRATION DETAILS

417-627-9878 | info@strongholddata.com

continued from page 4

found in dollars and cents.

"It's a value-added opportunity for farmers to get a little extra out of their crops, and the environmental benefit of using a cleaner fuel and being a renewable fuel," Rockhold said. "There are some benefits that don't show up on paper."

Biodiesel has been around Missouri since the early 1990s and its use has grown substantially in the state over that time. Missouri now currently produces 200 million gallons of biodiesel each year, which supports more than 2,600 jobs.

"Biodiesel makes sense for local government fleets," says Matt Amick, Director of Biofuels and New Uses with Missouri Soybean Merchandising Council. "Biodiesel has a proven performance providing benefits such as higher lubricity, higher cetane and lower emissions, it's a Missouri-made fuel produced using soybeans grown in

the state and its cost effective. A recent study showed biodiesel helps save up to 4 percent on the cost of diesel by extending the supply of diesel fuel. At today's prices, that's over 20 cents."

Amick says the number of local government and state agency fleets using biodiesel blends is growing every year.

"Scotland County, like so many other counties in our state, derive so much economic development and tax revenue from agriculture," says Amick. "We don't have any petroleum refineries in Missouri. By supporting biodiesel, counties like Scotland County are choosing to support the local farmers who make important contributions to the county and also supporting a fuel which is made in Missouri."

The B20 biodiesel that Scotland County was contracted to receive was supposed to start coming in April and run through to October, but the first shipment wasn't brought in until late May due to a mistake by the vendor who delivered regular No. 2 diesel in April instead of B20.

Still, after using it, Rockhold said there hasn't been any reported problems.

"Our road boss was in the other day and said that we haven't had any issues with what we've used so far," Rockhold said.

CFS
ENGINEERS

1421 E 104th Street
Suite 100
Kansas City, Missouri 64131
816.333.4477
www.cfse.com

One Vision. One Team. One Call.







Call today for
free building
inspection!

Miller County Courthouse

Tuscumbia, MO

BEFORE



BEFORE



BEFORE & AFTER



- Cleaning
- Caulking
- Waterproof Coatings

Masonry Restoration

- Cleaning
- Re-pointing
- Terra-Cotta repair/replacement
- Stone repair/replacement
- Brick replacement/re-building
- Lintel replacement
- Sealant replacement
- Thru-wall flashings
- Structural anchorage
- Exterior wall coatings
- Below-grade waterproofing

Concrete Restoration

- Structural concrete
- Waterproofing membranes
- Sealant Replacement
- Expansion joint replacement
- Injection

Phone: 417-865-9991
Fax: 417-865-9995
Email: tomb@mtscontracting.com
jeffd@mtscontracting.com
Website: www.mtscontracting.com

STIFEL

PROUDLY SERVING
Missouri Counties Since 1890.

Stifel has been helping Missouri
counties raise capital for facility improvements
and new construction for more than
130 YEARS.

CONTACT US TODAY
www.stifel.com/publicfinance

Brent Blevins | (417) 799-7664 | blevinsb@stifel.com

Lorenzo Boyd | (314) 342-8477 | lorenzo.boyd@stifel.com

Becky Esrock | (314) 342-2923 | esrockb@stifel.com

Martin Ghafoori | (314) 342-8467 | ghafoorim@stifel.com

Jack Holland | (816) 203-8734 | hollandj@stifel.com

Stan Jones | (816) 203-8741 | jonestas@stifel.com

Joe Kinder | (816) 203-8735 | kinderj@stifel.com

Michael Short | (816) 203-8739 | shortm@stifel.com

Matt Webster | (816) 203-8738 | websterma@stifel.com

MAC, MAC Trust launch new websites



ABOUT ADVOCACY COUNTY INFORMATION ASSOCIATE MEMBERS MAC TRUST CONTACT LOGIN



The Missouri Association of Counties (MAC) and MAC Trust recently launched new websites that will benefit members with private access and more features than the association's previous website.

The new websites at mocounties.com and macwctrust.com will make for a more friendly experience when visiting and finding information that is important for county governments and MAC Trust members.

The websites were designed by 54 Design Group (54DG), who has built a number of county websites in Missouri.

The new websites are less busy than the previous website and easier to navigate with pull-down menus when hovering over the tabs with a mouse. The websites are also responsive to the type of device a visitor or member may be using, meaning they are mobile friendly for viewing on a smartphone or tablet.

A member's section has been created on both websites, which allows information to be protected. MAC and Trust members, vendors, partners and sponsors will have to login to be able to access the information in the member's



At the top, a screen shot of MAC's new website represents a cleaner, less busy design that is an update from MAC's previous website (above) that was developed more than 10 years ago. MAC's new website features a member's section that is not available to the public, so MAC members will have to create a profile to login to access the information.

section of each website.

In order to access the private content on the websites, users will have to create an account. If a member has not created an account to access the member content on each website, please reach out to Carah Bright at cbright@mocounties.com.

Once you login, the link will change from "Login" to "Account." If you have signed out, simply select "Login" and enter the email you used to create the account along with the password you provided. If you've forgotten your

password select "Forgot Password?" and follow the instructions in the email.

Selecting "Account" at the bottom of the Member Area menu will take you to your account area where you can add your mailing address, change your password, cancel your membership and view orders. From time to time, MAC may offer resources for purchase, such as training webinars.

New features will continue to be added to the website in the future to make it become a one-stop shop for all county resources.



RICE SIGNS

Your Leader In Transportation Safety

- Traffic Signs
- Roll-Up Construction Signs
- Sign Stands & Work Zone Safety
- Pedestrian Safety Signs
- Custom Street Name Signs
- Sign Posts & Hardware



CALL FOR FREE CATALOG

Contact Us / Bids / Quotes:

Phone: 888-728-7665

Fax: 877-546-6165

Email: sales@RiceSigns.com

Web: www.RiceSigns.com

Melahn joins MAC staff as the new Event & Marketing Coordinator

Meredith Melahn joined the staff of the Missouri Association of Counties (MAC) on April 4 and serves as the association's new Event & Marketing Coordinator. She brings more than a decade of experience in business administration, as well as three years of experience in association work as a staff member at the Missouri Insurance Coalition.

Melahn will be planning events for MAC and working to promote events and programs to potential sponsors and vendors. Prior to joining MAC, Melahn served as an executive assistant at the Insurance Coalition from 2019-2022, overseeing aspects of organizing meetings and events for the coalition, tracking legislation, and dealing with other responsibilities within the office.

Prior to working for the Insurance



Coalition, Melahn worked as a legal assistant for more than 10 years with the law firm of Lewis E. Melahn.

Melahn holds a bachelor's degree in biology from the University of

Missouri.

When you're attending MAC events, please don't forget to introduce yourself and welcome her to the association.

PIPER | SANDLER
Realize the power of partnership.

For your next financing, Realize the Power of Partnership®

At Piper Sandler, we cultivate creative ideas and tailored solutions that serve client interests first and foremost. Instead of leading with what's best for us, we start with what matters to you.

Todd Goffoy
Managing Director
Public Finance
+1 913 345-3373
todd.goffoy@psc.com

Chris Collier
Managing Director
Public Finance
+1 314 726-7535
chris.collier@psc.com

Matt Courtney
Vice President
Public Finance
+1 913 345-3355
matthew.courtney@psc.com

Hannah Draper
Associate
Public Finance
+1 913 345-3302
hannah.draper@psc.com

PiperSandler.com
Piper Sandler & Co. Since 1895. Member SIPC and NYSE.

TEST YOUR SMARTGRADE™ SKILLS



Find out what it's like to run an 872GP SmartGrade Motor Grader just like Wickens Construction!

Scan the QR code on your smartphone to see if you have what it takes.

LET'S SEE WHAT YOU'VE GOT



JOHN DEERE

Breaking ground In the motor grader industry, John Deere SmartGrade™ Motor Graders offer the first-of-its-kind mastless 3D integrated grade control from the factory, arriving at your job site ready to work.

Murphy Tractor & Equipment Co.

Kansas City, MO (816)-483-5000
Springfield, MO (417)-863-1000
www.murphytractor.com

McCoy Construction and Forestry

Fenton, MO (636)-349-0200
Foristell, MO (636)-463-2500
Cuba, MO (573)-885-0500
Cape Girardeau, MO (573)-334-0563
www.mccoycf.com

Martin Equipment of Illinois

Palmyra, MO (573)-769-2274
Ashland, MO (573)-657-2154
www.meoi.com



Ron Houseman, right, poses with NACo Executive Director Matt Chase, left, and NACo President Larry Johnson, Commissioner from DeKalb County, Ga., at last year's MAC Annual Conference at Margaritaville Lake Resort in November.

Ron Houseman celebrates 42 years of NACo conferences

By Charlie Ban
NACo County News

Taney County, in south central Missouri, was facing financial troubles in the winter of 1980. The presiding commissioner had a request to make of second-year County Clerk Ron Houseman. He was to go on a fact-finding mission to NACo's Legislative Conference, the county's first participation with the organization since joining.

"We'd like you to go and bring back whatever ideas, whatever thoughts, whatever solutions there might be for what we're facing," Houseman recalled being told. "I went and I was just blown away. I attended all the different meetings I could, I met dozens and dozens of people and brought back a suitcase of pamphlets and folders and anything I could get a hold of. I was overwhelmed."

He was hooked. And he kept

coming back, year after year. This year's Legislative Conference is his 42nd, a streak built on the back of years as the Taney County clerk,

presiding commissioner and economic development director, following by stints as an intergovernmental liaison of neighboring Stone County, Mo. and

County Experience:

- Administration Buildings
- Justice Centers
- Courthouses
- Jails
- Juvenile Centers
- Renovations
- Re-Roof

Septagon Services:

- Public Facility Planning
- Scheduling
- Budgeting
- Value Engineering
- Bid Management
- Site Management
- Quality Control
- Safety
- Project Reporting

www.septagon.com
Nick Smith and Dennis Paul
660-827-2112



SEPTAGON
CONSTRUCTION

now Cape Girardeau County.

That tenure has included membership on NACo's Board of Directors, Environment, Energy and Land Use and Transportation steering committees and currently the Rural Action Caucus.

"I've just wanted to stay active," he said. "It's an organization that I've wanted to stay involved with for almost the entire length of my career in county government."

Most immediately, what he brought back to Taney County was quick action to access grant funding, which allowed the county to get help funding its cash-strapped programs.

"We didn't even know how to apply for grants," he said. "With NACo's help, we were able to catch up and take advantage of the opportunities that were out there for counties."

And what he learned made him a better partner with state and federal governments.

"NACo taught me how to talk to my member of Congress," he said. "I thought I knew how to talk, but then I was really able to make actionable points. I learned how much time I'd have to talk and get my message across, pare what I had to say down to salient points and paint the picture of how help for my county could help the congressional district. That's incredibly valuable."

What kept him coming back to four decades of conferences, in addition to the technical knowhow, has been the relationships with other county officials.

"The friends I met from Hawaii to New York became a family for me," he said. "It's truly been a blessing for me to come to conferences so I could take something home to better serve my constituents, but also find kindred spirits in counties across the country who can relate to each other."

"There are friends I've had for years and I don't know if they're Republican or Democrat," he noted. "I don't

care, and they don't seem to care. We don't talk politics, we don't argue philosophies, we come together at NACo meetings to find solutions to the problems we're facing."

Houseman is taking a victory lap in what he expects to be his last year working for counties, heading to his final Annual Conference July 21-24 in Adams County, Colo., where he will

help new NACo Board of Directors member Robert Dixon, a Greene County, Mo. commissioner, learn the ropes.

"I'll introduce him to who he needs to know," he said, "the people who made my 42 years coming to conferences so memorable and helped the counties I've represented learn so much."

GovernmentOR®

Partners in Government Solutions

GovernmentOR specializes in comprehensive computer systems utilizing advanced hardware technology. We have been providing solutions to local governments across the Midwest for over twenty years. GSI provides 1-800 support line, User Groups, application seminars and comprehensive training to assist and support you.

We provide the following software solutions:

- Tax Billing & Collection
- Collection Management
- Merchant License
- Railroad & Utilities
- Land Sale
- Appraisal & Assessment
 - Real Estate
 - Personal Property
 - Drainage
- Market Statistics & Analysis
- Recorder
- Financial Management Suite
 - Budgeting
 - General Ledger
 - Purchase Orders
 - Accounts Payable
- Payroll / Personnel

**Call 1-800-274-0614
or visit our website @
www.governmentor.com**



The Missouri Association of Counties hosted its Legislative Day in April at the Capitol Plaza Hotel and the first floor of the Capitol Rotunda in Jefferson City. Attendees heard from the governor and legislators at the Capitol and learned how Regional Planning Commissions can be a resource for counties. NACo Vice President Denise Winfrey also spoke to attendees.

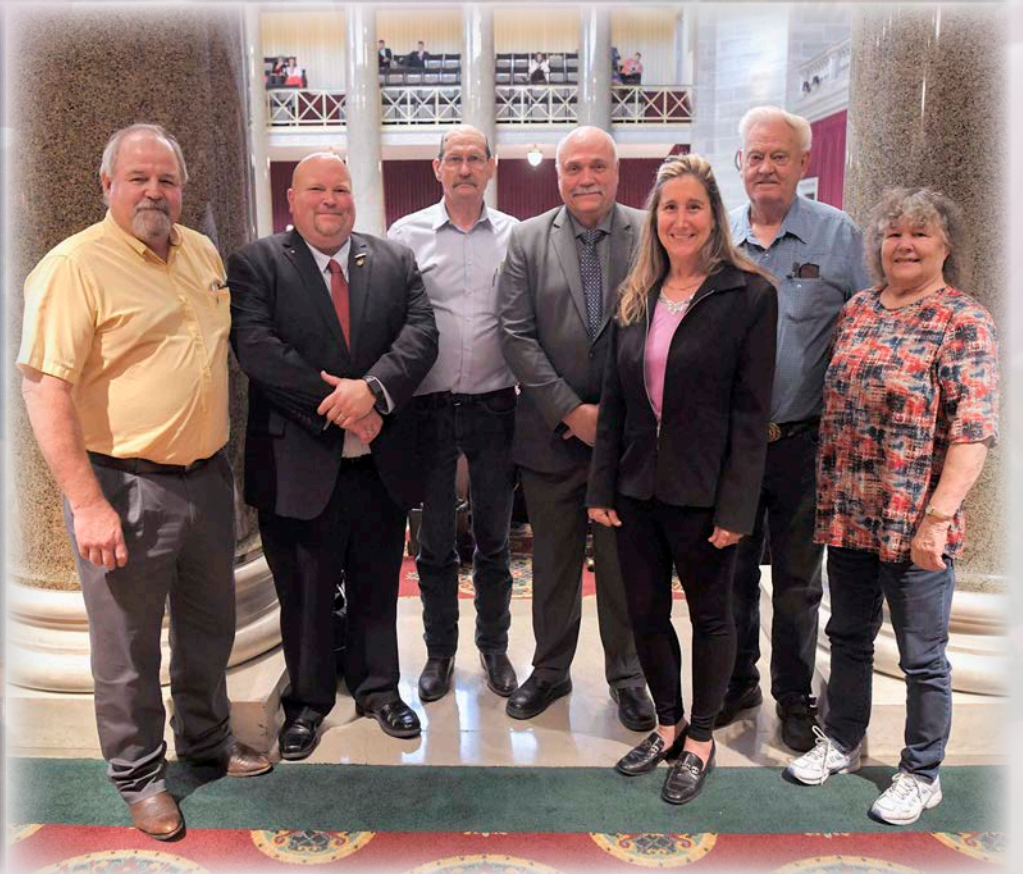












51st MAC Annual Conference and Expo

Nov. 20-22, 2022

**Margaritaville Lake Resort
Osage Beach, Mo.**



It's All About Team Work

Sessions will include topics on: Recreational marijuana, cybersecurity, broadband, human resources, salary commission, legal updates, Missouri State Tax Commission, National Association of Counties and more!

Along with affiliate and committee meetings, MAC will be establishing the Missouri County Government Platform for the 2023 Legislative Session. Elections will also be held to fill vacancies on the MAC Board of Directors.

Don't forget about the trip giveaway! Someone will be lucky enough to win a \$2,000 vacation getaway to the destination of their choice.

Mail in the registration form below or register online starting Aug. 1.

Online registration opens Aug. 1!

www.macregistrations.com

**Mail this form (one per county official) with payment to
MAC Conference, PO Box 234, Jefferson City, MO 65102-0234**

Name _____ Title _____

County/Business _____ Street Address _____

City _____ State _____ Zip _____ Phone _____

Cancel by Nov. 4 to receive refund or stop billing. All cancellations will be charged a \$25 processing fee.

___ (X) County Officials' Early Registration by Nov. 4 = \$150 (payment must accompany registration)

___ (X) County Officials' Late or At-Site Registration after Nov. 4 = \$175

___ (X) Spouse's Early Registration by Nov. 4 = \$80 (payment must accompany registration)

Spouse's Name (If attending) _____

___ (X) Spouse's Late or At-Site Registration after Nov. 4 = \$100

Spouse's Name (If attending) _____

Payment Must Accompany Registration

For hotel accommodations call, Margaritaville Lake Resort, Osage Beach, Mo. at 800-826-8272 or 573-348-3131. You can also book online at www.margaritavilleresortlakeoftheozarks.com (Code MACR). Reservation requests must be received no later than Nov. 5 to guarantee accommodations. However, reservations may be accepted and confirmed up to the opening day of the conference (providing accommodations are still available), but the group rate is not guaranteed. The group rate is \$102, plus 3% lodging tax. If your county is tax-exempt, please provide a letter indicating your status upon check in.



Support MAC's Associate Members

Accounting:

Armanino LLP - St. Louis, MO 314-302-1382
Computer Information Concepts - Greeley, CO 800-437-7457
Evers & Company CPAs - Jefferson City, MO 573-635-0227
KPM CPAs & Advisors - Springfield, MO 417-882-4300

Architects/Engineering:

A-Lert Roof Systems - New Braunfels, TX 830-626-7755
Allgeier, Martin & Associates Inc. - Joplin, MO 417-680-7200
American Council of Engineering Companies of MO (ACEC) - Jefferson City, MO 573-634-4080
Anderson Engineering - Kansas City, MO 816-777-0400
Cochran Engineering - Union, MO 636-584-0540
Cook, Flatt & Strobel Engineers - Topeka, KS 785-272-4706
Great River Engineering - Springfield, MO 417-886-7171
Howe Company, LLC - Macon, MO 660-395-4693
MECO Engineering Co. Inc. - Hannibal, MO 573-221-4048
N•FORM Architecture - Springfield, MO 417-873-2255
Navigate Building Solutions - St. Louis, MO 314-713-6205
Poepping, Stone, Bach & Associates - Quincy, IL 217-223-4605
Shive-Hattery - Cedar Rapids, IA 319-362-0313
Smith & Co. - Poplar Bluff, MO 573-785-9621

Attorneys/Legal Services:

Ellis Ellis Hammons & Johnson - Springfield, MO 417-866-5091
Gilmore & Bell P.C. - Kansas City, MO 816-221-1000
The Limbaugh Firm - Cape Girardeau, MO 573-335-3316
Schraeder Law Firm - St. Louis, MO 314-454-1500

Banking/Finance/Investments:

Central Bank - Jefferson City, MO 573-634-1234
L.J. Hart & Company - St. Louis, MO 800-264-4477
Piper Sandler - Leawood, KS 913-345-3300
Raymond James & Associates - Kansas City, MO 816-391-4120
Stifel - St. Louis, MO 314-342-8467

Construction (Bridge/Building/Drainage):

MTS Contracting Inc. - Springfield, MO 417-865-9991
Oden Enterprises Inc. - Wahoo, NE 402-443-4502
Septagon Construction Management - Sedalia, MO 660-827-2112

Computer Systems & Software:

54 Design Group, LLC - Mexico, MO 573-575-6315
DEVNET Inc. - Sycamore, IL 815-899-6850
Election Systems & Software - Omaha, NE 877-377-8683
GovernMENTOR Systems Inc. - Independence, MO 816-254-7610
Midwest Computech, Inc. - Columbia, MO 800-346-8934
Mobile Innovations - Parkville, MO 816-728-8279
TS Conard Technology Solutions - St. Joseph, MO 816-233-3777
Vanguard Appraisals - Cedar Rapids, IA 319-365-8625

Drainage Systems:

Advanced Drainage Systems - Springfield, MO 417-808-0151

Energy Services:

Veregy (formerly the CTS Group) - St. Louis, MO 314-221-5235
Enbridge - Cushing, OK 918-223-2496
GPR Wegman Company - St. Louis, MO 314-640-8926

Equipment/Supplies (Road & Construction):

Hall Brothers, Inc. - Marysville, KS 785-713-1381
Kirby-Smith Machinery, Inc. - Oklahoma City, OK 405-495-7820
Knapheide Truck Equipment Co. - Jefferson City, MO 573-893-5200
Martin Equipment of Illinois - Ashland, MO 573-657-2154
Phoenix Services - Louisville, KY 7502-662-2565
Purple Wave Inc. - Manhattan, KS 785-537-5057

General Business:

HK Solution Group - Des Moines, IA 816-518-9631
Missouri One Call System - Jefferson City, MO 573-635-1818
St. Louis Electrical Connection - St. Louis, MO 314-420-5318

GIS & Mapping:

Surveying & Mapping - Maryville, MO 660-562-0050
Tyler Technologies - Yarmouth, ME 207-518-4745

Government Supplies/Services:

Mark Twain Regional Council of Gov. - Perry, MO 573-565-2203
Mo. Department of Labor and Industrial Relations - Division of Labor Standards - Jefferson City, MO 573-751-3400
Mo. Dept. of Natural Resources - Division of Energy - Jefferson City, MO 573-526-9544
Missouri Local Technical Assistance Program (MO-LTAP) - Rolla, MO 573-341-7200
Missouri Vocational Enterprises - Jefferson City, MO 800-392-8486
Northeast Missouri Regional Planning Commission - Memphis, MO 660-465-7281
State Emergency Management Agency - Jefferson City, MO 573-526-9104

Insurance & Employee Benefits:

Arthur J. Gallagher & Co. - St. Louis, MO 800-877-8218
CompAlliance - Merriam, KS 866-825-9800
CCMSI, Inc. - St. Louis, MO 314-418-5515
Genex Services - St. Peters, MO 314-973-4318
Group Benefit Services - Springfield, MO 417-883-8088
HIC Agency, Inc. - Overland Park, KS 913-275-3122
Missouri Public Entity Risk Management Fund (MOPERM) - Jefferson City, MO 888-389-8198
Nationwide Retirement Solutions - Denver, CO 303-452-8051

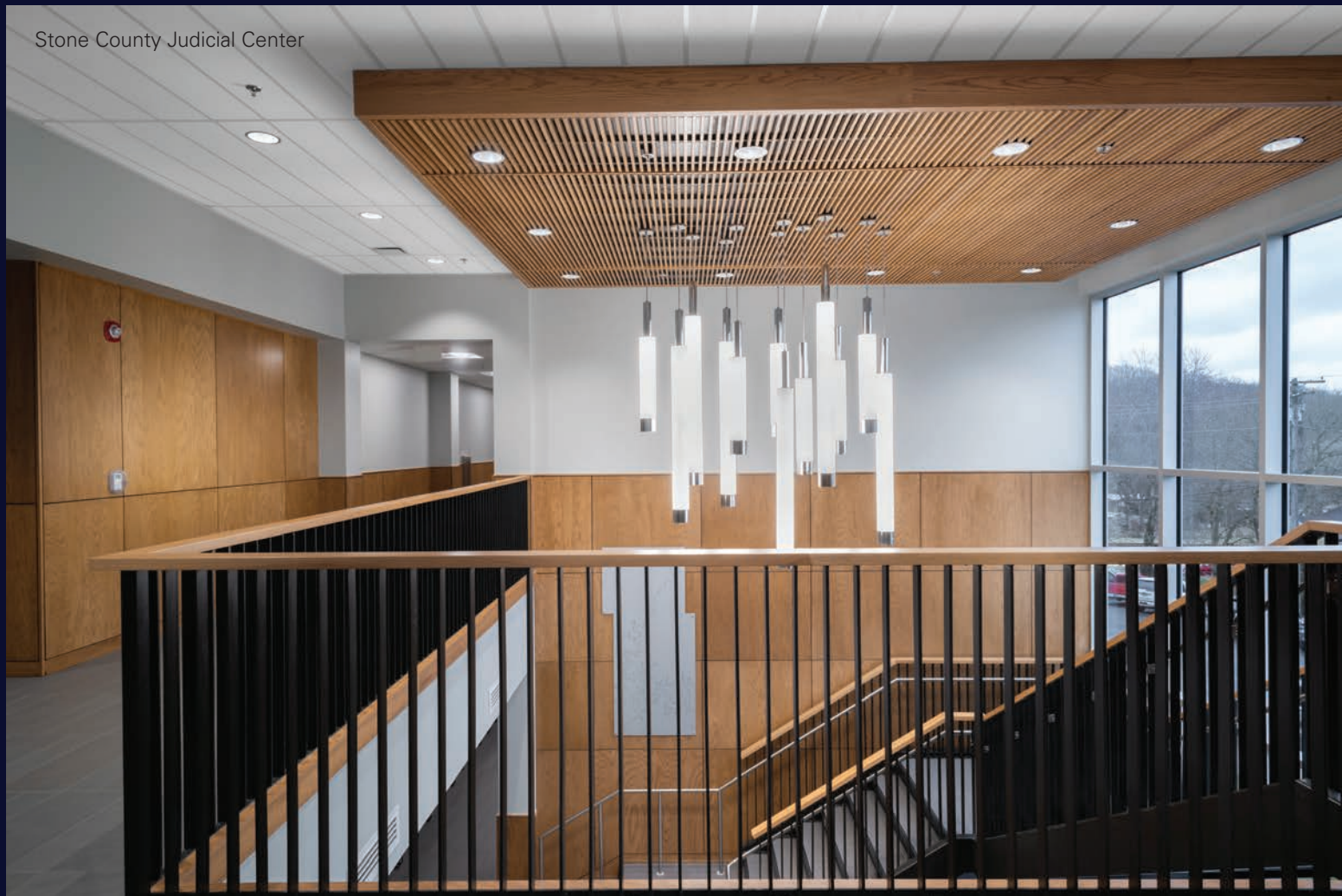
Property Tax Collections:

Autoagent Data Solutions - Boca Raton, FL 877-217-9001. ext. 250

Records Management:

DocuLock, LLC. - St. Joseph, MO 816-341-4436

Stone County Judicial Center

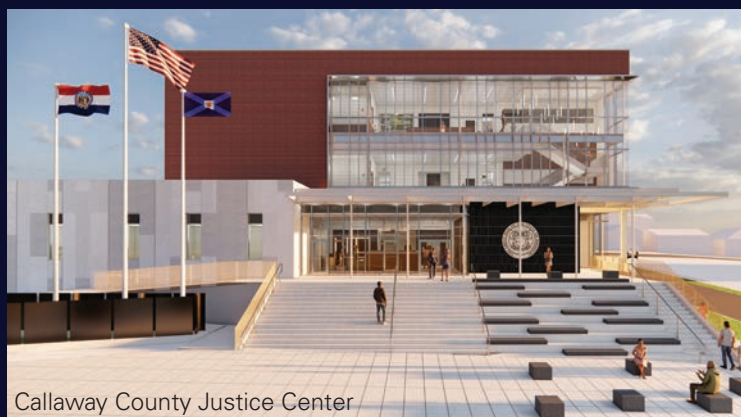


N·FORM

ARCHITECTURE

OUR SERVICES

ARCHITECTURE • MASTERPLANNING
INTERIOR DESIGN • HISTORIC PRESERVATION
GRANT COORDINATION



Callaway County Justice Center



Greene County Sheriff's Office and Jail

Achievement Award Competition for 2022

Deadline:
Sept. 30, 2022

Entry Instructions

1. Use the entry form format on the next page to create the first page of the entry form submission.
2. Obtain a letter of authorization. This is simply a letter signed either by a county executive or presiding commissioner authorizing the entry of the county's program(s) in the Achievement Award Competition. Counties may submit one (1) letter of endorsement for all entries, but please list each entry by program name in the letter of endorsement.
3. Construct the executive summary. This is the statement of the challenge and the solution. The executive summary is a very important part of your entry. It must be no more than three 8.5 by 11 double-spaced pages. Since this may be published for statewide distribution, please present the information how it should be used in print. MAC reserves the right to edit this material.

MAC invites counties to enter the 2022 Achievement Award Competition

These unique awards recognize the innovative and creative spirit of Missouri county governments in finding new and effective ways of providing programs and services to its citizens.

Judges will be looking for programs that are innovative, unique and easily replicable. County programs or projects submitted must have been in existence for at least one year. Only programs that are county programs will be considered.

Selection Criteria

A panel of county officials will evaluate the entries. Judges' decisions are final. The following criteria will be used to select the winners:

- Statement of the problem and solution.
- Innovation, resourcefulness, vision, uniqueness, and risk-taking.
- Replicability of the program/project.
- Cost-effectiveness of the program/project.

2021 winners

St. Louis County

- St. Louis County – Vote Anywhere

Boone County

- Boone County – Electronic Signature of Contracts

Camden County

- Camden County – Tax Sale Auction and Bidder Registration Automation

Cole County

- Cole County – Electronic Aperture Card Conversion

Saline County

- Saline County – Develop Saline County

USED REPAIR PARTS

Wheel Loaders, Crawlers, Track Excavators,
Loader Backhoes, Skidders, Skid-Steer Loaders,
Engines and Transmissions

"Rely on our Experience - Est. 1967"



**Schaefer
Enterprises**

1-800-626-6046

Most Major
Credit Cards
Accepted

www.sewlparts.com - parts@sewlparts.com
4535 State Route 3 North, P.O. Box 136, Wolf Lake, IL 62998-0136

SMITH&CO.

- Water
- Wastewater
- Streets/Roads
- Stormwater
- Site Plans
- Bridges

CONSULTING ENGINEERS
GEOTECHNICAL DRILLING

REMEDIATION
LAND SURVEYORS

AN EMPLOYEE OWNED COMPANY

901 VINE STREET
POPLAR BLUFF, MISSOURI
(573) 785-9621
www.shsmithco.com

- Geotechnical
- Drilling
- UST's
- Airports
- Industrial Parks

Entry form format

Please use the format below as a guide in creating the first page of the entry form submission for the MAC Achievement Award Competition:

Title of the entry

(to be used on this award — maximum of seven words)

County name (for joint submissions, please list all counties involved)

Contact name and title

Mailing address

City	State	Zip
------	-------	-----

Phone	Ext.
-------	------

Email

General information

All recipients will be notified by mail upon completion of judging in the fall.

The awards will be presented at MAC’s Annual Conference and Expo on Nov. 20-22 at the Lake of the Ozarks. However, this could be subject to change.

In the event that a multi-county application is honored, each county will receive an award.

If you have any questions, contact Carah Bright, MAC Member Engagement Director, at 573-634-2120, or cbright@mocounties.com

Include the following

- Completed entry form.
- Three-page executive summary.
- Copy of endorsement letter authorizing entry.

(One letter may be used for multiple entries, but please include a copy for each entry.)

Mail all of the above to:

Missouri Association of Counties
P.O. BOX 234
Jefferson City, MO 65102-0234 or email it to: cbright@mocounties.com

.....

Organize the entry’s executive summary as follows:

Overview – Provide a brief, 25-word summary of the program or project.

Problem or Challenge – Describe the problem or challenge the county faced and the process used to address it.

Solution – Describe the steps taken by the county to solve the problem or overcome the challenge.

Budget/Cost/Savings – How much money was budgeted for funding the project?

- List all sources of funding for the project.
- Did the project come within/under budget?
- What is the measure of increased productivity or time saved?

Results – Describe the results of the program/project. Discuss how the program or project has positively affected the community, improved delivery of services to the public, or improved administration of a program internally.

Project or Program Contact – List the name, title, mailing address, phone and email address of the person who can be contacted about the program.

Optional Submission – If the program involved the development of a video, brochure or pictures of progress, please enclose or email copies with the submission. Items will not be returned and become the property of MAC.



MAC Executive Director Steve Hobbs, second from left, talks during the recording of the 'Local Government Works' podcast at the office of the Missouri School Boards Association in Columbia. MML Executive Director Richard Sheets, third from left, and MSBA Executive Director Melissa Randol were also part of the podcast.

MAC teams up with MML, MSBA to start podcast about local governments

MAC has teamed up with the Missouri Municipal League and the Missouri School Boards Association to start the podcast *Local Government Works* that aims to highlight the importance of local governments throughout Missouri.

The introductory episode featured Richard Sheets, executive director, of the MML; Steve Hobbs, executive director of MAC and; Melissa Randol, executive director of MSBA. The three of them talked about how the local government organizations they represent build strong partnerships with the other local governments in their communities.

To listen to the podcast, you can search for *Local Government Works* in Spotify or Buzzsprout or other podcast platforms.

Keep an eye out for future *Local Government Works* podcasts to be promoted in the association's electronic newsletter, the County Courier. If you are not receiving the electronic

newsletter and wish to be added to the distribution list, please contact David

Owen at dowen@mocounties.com.



WHAT'S ON THE MENU OF YOUR DEFERRED COMP PROGRAM?

Just like enjoying a meal at a restaurant, your deferred compensation program should be able to suit the individual tastes of your employees. Nationwide offers a full menu of educational resources, innovative planning tools and a variety of investment options to meet the unique needs of public sector employees.

Serve your employees a deferred comp program that's made-to-order.

Contact us today.  877-677-3678  NRSforu.com




Nationwide Retirement Solutions (Nationwide) partners with the National Association of Counties (NACo) to provide counties and their employees with a competitive deferred compensation program. As part of this partnership, Nationwide pays a fee to NACo in exchange for NACo's exclusive endorsement, marketing support, and program oversight of Nationwide products made available under the program. For more information, including fees paid, Nationwide encourages you to visit NRSforu.com.

Information provided by retirement specialists is for educational purposes only and is not intended as investment advice.

Retirement Specialists are registered representatives of Nationwide Investment Services Corporation, member FINRA. In MI only: Nationwide Investment Svcs. Corporation.

©2010 Nationwide Retirement Solutions, Inc. All rights reserved. One Nationwide Blvd., Columbus, OH 43215. Nationwide, On Your Side and the Nationwide framework are service marks of Nationwide Mutual Insurance Company. NRV-0442AO-NX (09/10)

Beyond investing

MOSIP has provided comprehensive investment management services, education, and support to Missouri school districts, counties and other political entities since 1991.

Learn more at
mosip.org



MISSOURI SECURITIES INVESTMENT PROGRAM



*This information is for institutional investor use only, not for further distribution to retail investors, and does not represent an offer to sell or a solicitation of an offer to buy or sell any fund or other security. Investors should consider the investment objectives, risks, charges and expenses before investing in any of the Missouri Securities Investment Program's portfolios. This and other information about the Program's portfolios is available in the Program's current Information Statement, which should be read carefully before investing. A copy of the Information Statement may be obtained by calling 1-877-MY-MOSIP or is available on the Program's website at www.mosip.org. While the MOSIP Liquid Series seeks to maintain a stable net asset value of \$1.00 per share and the MOSIP Term portfolio seeks to achieve a net asset value of \$1.00 per share at the stated maturity, it is possible to lose money investing in the Program. An investment in the Program is not insured or guaranteed by the Federal Deposit Insurance Corporation or any other government agency. Shares of the Program's portfolios are distributed by **PFM Fund Distributors, Inc.**, member Financial Industry Regulatory Authority (FINRA) (www.finra.org) and Securities Investor Protection Corporation (SIPC) (www.sipc.org). PFM Fund Distributors, Inc. is an affiliate of PFM Asset Management LLC.*

Long-time friend of MAC and owner of Oden Enterprises passes away



Mert Oden, founder of Oden Enterprises, speaks to MAC members after receiving the Business/Government Partnership Award in 2018 during the association's Annual Conference. Mert passed away on May 26, 2022.

Mert Oden of Oden Enterprises, of Wahoo, Neb., died May 26, 2022. He was 84. Mert started Oden Enterprises in 1973. Oden Enterprises was an Associate Member of Missouri Association of Counties (MAC) and had received three Business/Government Partnership Awards from MAC, with 2018 being the company's most recent.

"MAC lost a dear friend and long-time associate member with the passing of Mert Oden last week," MAC Executive Director Steve Hobbs said. "Mert was a staple at our annual conference for many years. He made so many friends while attending our events and his presence will be greatly missed. When you have the time, please send your condolences to Mert's family and the employees of Oden Enterprises."

Oden Enterprises has been an Associate Member since the programs inception in 1988 and has attended MAC's annual conference since the 1970s.

Serving counties since 1987...

MAC Trust

Trust members needing to report a claim?

Contact NurseNow: 855-342-6942 or CCMSI (Claims Administrator): 314-418-5512

Need risk management services, MAC Trust University help, loss run information?

Contact Sean McGonigle, Risk Manager

Office: 573-634-2120; Email: smcgonigle@mocounties.com



Dr. Bruce A. Johnson



Larry J. Hart



Thomas J. Pisarkiewicz



Dr. Wesley T. Townsend



Courtney B. Wegman



Erin A. McManus



Brad M. Wegman



Dr. Jeff D. Lindsey



Neil A. Branham



Todd McCrackin

***L.J. Hart & Company provides
municipal bond underwriting
and financial advisory services.
We create innovative solutions
to finance the specific needs of
Counties.***



Jasper County Juvenile Detention Center



Callaway County Justice Center



Jasper County Courts Building



Picture courtesy of Pacificom Multimedia LLC

Structuring Financings to Meet the Needs of Local Governments

16401 Swingley Ridge Road • Suite 210 • St. Louis, Missouri • 63017-0740

(636) 537-9939 • www.ljhartco.com

Johnson receives high honors

Dallas County Public Administrator and MAC Treasurer Carol Johnson was named the Missouri Public Administrator of the Year by the Missouri Association of Public Administrators at the association's training session in April.

She was also presented with a Senate resolution in recognition of her honors by Sen. Sandy Crawford in her office at the Capitol.

Johnson has served as the Dallas County Public Administrator since 2009 and was elected as MAC's Treasurer last year.



Dallas County Public Administrator, right, poses with MAC Executive Director Steve Hobbs at the MAC office after receiving the Public Administrator of the Year award from the Missouri Association of Public Administrators in April.

*Your Accountability
is Our Business!*

SPECIALIZING IN:

AUDITS
ACCOUNTING
FINANCIAL REPORTING
PAYROLL PROCESSING
TAX PLANNING AND RETURN PREPARATION
RETIREMENT PLAN ADMINISTRATION

EVERS & COMPANY, CPA'S, L.L.C.
Certified Public Accountants and Consultants

CONTACT US:
(573) 635-0227


INNOVATIVE PUBLIC FINANCE SOLUTIONS




GILMORE BELL

See our website for an office near you.
gilmorebell.com

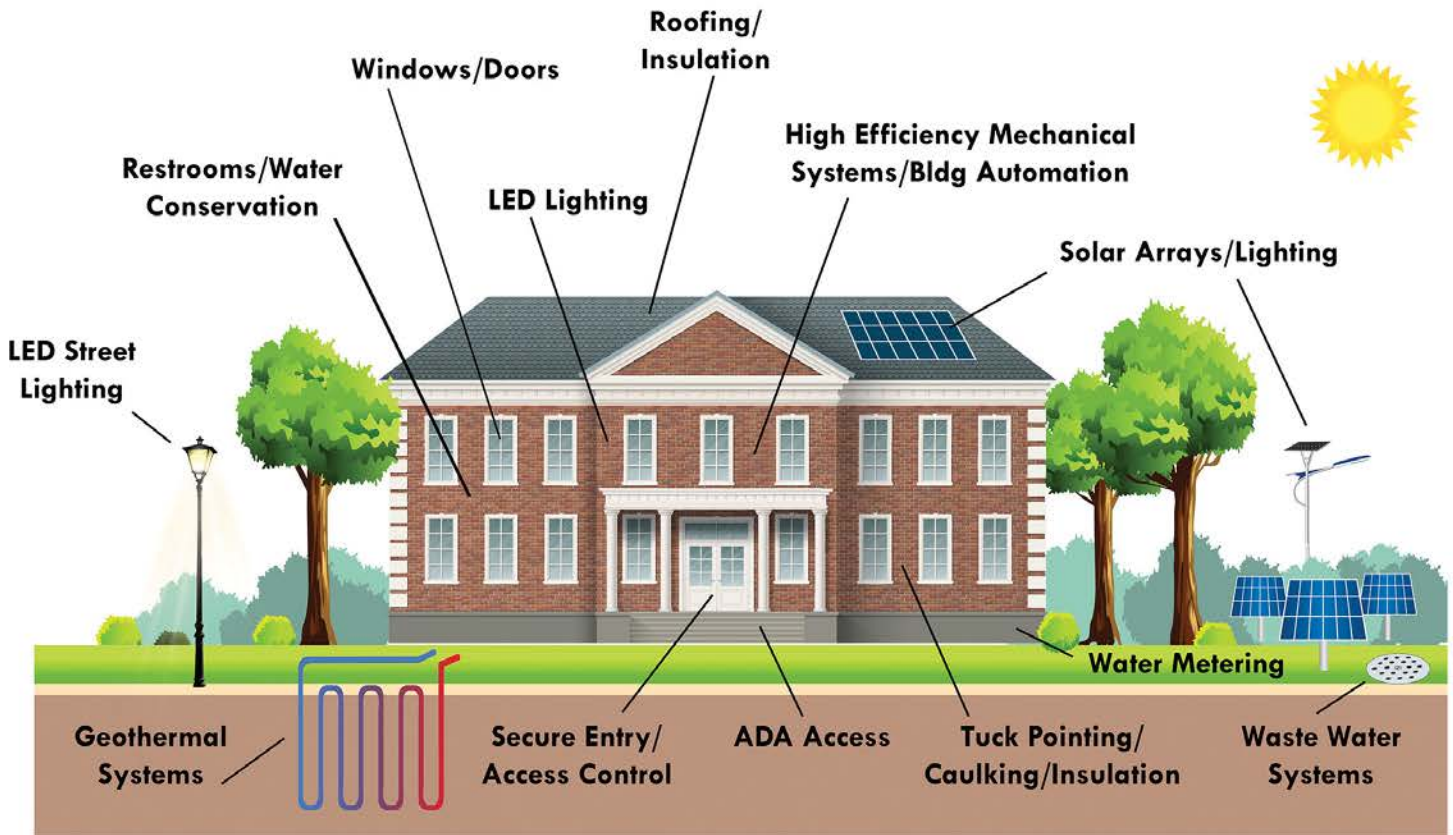
The choice of a lawyer is an important decision and should not be based solely on advertisements. Gilmore & Bell, PC has offices nationwide.



1 (800) 844-3232
info@gilmorebell.com

Pay for Today's Improvements With Tomorrow's Savings

Infrastructure Upgrades Funded with Guaranteed Savings



Design/Build Performance Based Facility and Infrastructure Solutions

CTS helps local governments leverage special financing options and savings to fund much needed facility and infrastructure improvements. The results are modernized, comfortable and healthy public facilities with reduced energy and operational costs.

- ✓ Turnkey, engineered solutions improve comfort as well as energy and operational efficiency
- ✓ Projects designed to maximize economic and environmental impact
- ✓ Custom approach to fit specific client needs with lowest life-cycle cost
- ✓ Guaranteed price, savings and performance
- ✓ Address deferred maintenance and long-term capital improvement plan
- ✓ On site Project Management
- ✓ Single point of contact and responsibility



Ellie Blankenship
Local Government Account Executive
314-221-5235
eblankenship@ctsgroup.com

John Shaw
Municipal Market Manager
314-324-7071
jshaw@ctsgroup.com